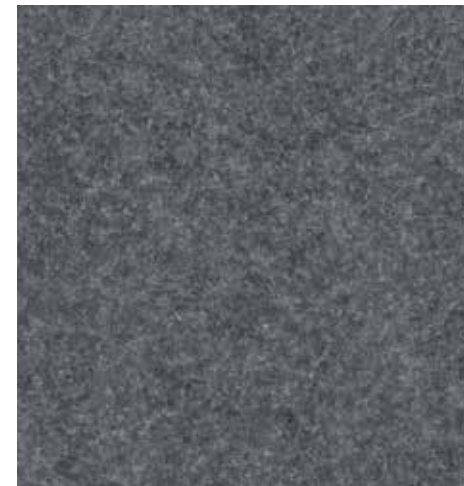


Felt 9900

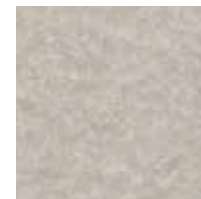
Felt 9900



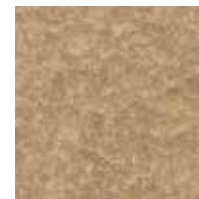
Sterling
3057



White*
8888



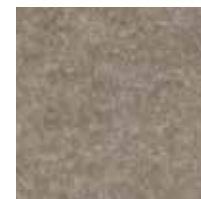
Ivory
3206



Cork
3065



Aluminum
3055



Dune
3062



Latte
3063



Maize
3204



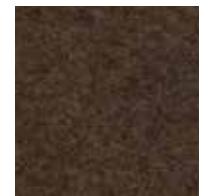
Pear
3210



Sky
3052



Pebble
3056



Mink
3066



Saffron
3367



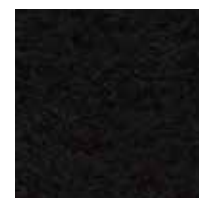
Aegean
3051



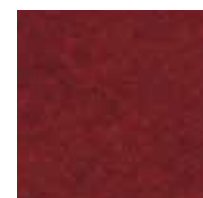
Liberty
3053



Deep Sea
3054



Ebony
3059



Cherry
3362



Azalea
3049

Specifications

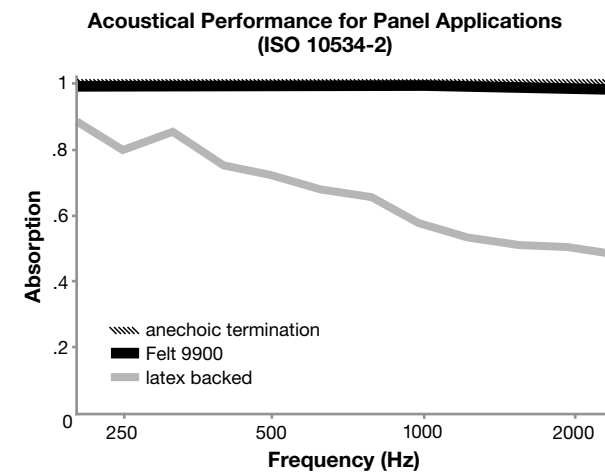
| | |
|---------|---|
| Content | 80% polyester 20% post-consumer recycled polyester |
| Weight | 10.2 ± 1.0 oz./lin. yd. |
| Width | 64" min. useable |
| Repeat | none |

Cleaning Code

Standard Care Label W-S. Clean with water based cleaning agents, foam or pure, water free solvents. Vacuuming or light brushing is recommended to prevent dust and soil buildup. May also be disinfected with hydrogen peroxide, alcohol, and quaternary ammonium (quat) based cleaners.

Acoustical Performance

The plot below summarizes impedance tube measurements of absorption of an anechoic termination and various fabrics in front of the anechoic termination.



| | |
|--|------|
| NRC of anechoic termination | 1.00 |
| NRC of fabric in front of anechoic termination | 0.99 |

Performance

- Colorfastness to Light (AATCC 16.3 Option 3)
Grade 4 min. at 40 hours
- Colorfastness to Crocking (AATCC 8)
Grade 4 min. dry & Grade 3 min. wet
- Breaking Strength (ASTM D5034)
130 lbf min. warp and 95 lbf min. fill
- Flammability (ASTM E84)
ASTM E84 Class I or A

Miscellaneous

Proudly made in North America supporting our local communities.

Application testing of this product is recommended. Colors may vary between dye lots. This is a non-directional fabric.

* Light fabric are subject to transparency issues depending on lighting intensity and internal structure. Application testing of this product is recommended.

This product is a **Feltväri™** non-woven.

Visit guilfordofmaine.com for samples.

This pattern is included in the underwriters laboratory panel fabric recognition program. Additional testing of this U.L. recognized component fabric is not required on approved panels from participating manufacturers.

*Certification Marks owned by the Association for Contract Textiles, Inc.